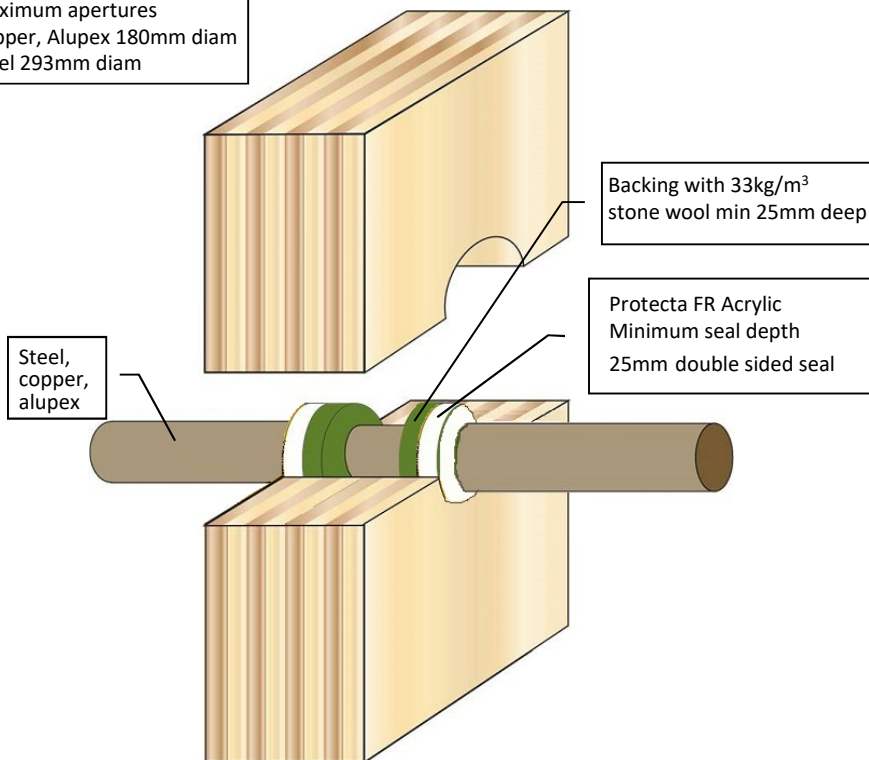


Protecta FR Acrylic 100mm Solid Timber or CLT Wall Steel, Copper, Alupex - Bare Pipes

Installation Instructions

1. Before installing Protecta® FR Acrylic ensure that the surface of all service penetrations and surrounding construction is free from all loose contaminants, dust and grease.
2. As Protecta® FR Acrylic is water based, in cases where corrosion protection is a problem; some metals may require a barrier between the sealant and the metal surface prior to this installation.
3. Install the backing material. Cut this slightly oversize and insert into the gap ensuring a tight friction fit. Ensure correct depth is achieved.
4. Fill the gap or joint with Protecta® FR Acrylic on both sides to the required depth.
5. Apply the sealant generously to prevent air bubbles. Finish the bead with a moist spatula, pallet knife or brush.
6. Protecta® FR Acrylic can be over-painted with most emulsion or alkyd (gloss) paints.

Maximum apertures
Copper, Alupex 180mm diam
Steel 293mm diam



System/FPA Register ID# FC314

| | |
|---------------------|--|
| Products | Protecta FR Acrylic Stone wool backing $\geq 33 \text{ kg/m}^3$ |
| Application | Fire stopping of metal pipes in timber walls |
| Construction | Minimum wall thickness of 100 mm and comprise solid wood or cross-laminated timber minimum density of 510 kg/m^3 |

Fire & Sound classification

| | |
|--|------------|
| Steel pipes $\leq \varnothing 273 \text{ mm}$ | FRR -/90/- |
| Copper or steel pipes $\leq \varnothing 54 \text{ mm}$ | FRR -/90/- |
| Alupex pipes $\leq \varnothing 75 \text{ mm}$ | FRR -/90/- |
| ZERO smoke leakage up to 200Pa | |
| Sound reduction (seal only) | STC 62 |

As a part of our policy of on-going product development and testing, we reserve the right to modify, alter or change product specifications without giving notice. All information contained in this document is given in good faith and is provided for guidance only. Any drawings provided are for illustrative purposes only. As Polyseam has no control over the methods or competence of installation and of prevailing site conditions, no warranties, expressed or implied, is intended to be given as to the actual performance of the product mentioned or referred to herein and no liability whatsoever will be accepted for any loss, damage or injury arising from the use of the information given.

For all technical details on the products specified please refer to the technical data sheets that can be found on www.firestopcentre.co.nz

Signed and approved:



Polyseam Ltd, 15 St Andrews Road,
Huddersfield, West Yorkshire, HD1 6SB

| | |
|--------------------------|-----------------------------|
| Sheet size: A4 | Drawn date & no: 24/5/21 |
|--------------------------|-----------------------------|

| | |
|----------------------|------------------|
| Scale: NTS | Drawn by: K.B |
|----------------------|------------------|